

Bollards

CONTEMPORARY AND TRADITIONAL LED

Solid State Lighting

CAVALIER T8 LED LUMEN TUBE



A slender but tall bollard to match the smaller version of the Cavalier 8 bollard. This uniquely designed tall bollard adds a striking appearance to any location. When used alongside the smaller Cavalier 8 bollard, a sense of unity can be achieved across any landscape.

CONSTRUCTION:

Bottom section is extruded 6061-T6 aluminum, 5" round x .125, with a cast A356-T6 base, welded circumferentially on the outside.

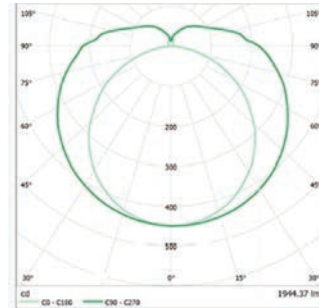
Four 3/4" x 25" galvanized anchor bolts included. Top section is a heavy-duty cast aluminum removable top plate for relamping. Recommended overall heights from ground level to top of luminaire, 8', 10' or 12'. See standard and custom

colors below. Each bollard contains two tubes, standard.

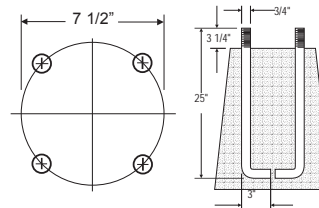
Beam Angle of 300°

A uniquely patented LED technology, the Lumen Tube offers the widest beam angle in the LED lighting industry, making an ideal solution for supermarkets, schools, car dealerships, laboratories, factories, and so much more.

Separate surge protectors in addition to all drivers, are installed in the circuitry as a company standard.



Isocurves of 300° beam angle



Made in USA

Components

LED LIGHT ENGINE SPECIFICATIONS:

MODEL#	TUBE LENGTH	2 TUBES WATTAGES	2 TUBES LUMENS	EFFICACY	CCT	CRI	IES DIST.
LUMEN TUBE							
1-Tube 10W-1020LM-T5	2FT	2 Tubes 20W	2 Tubes 2040lm	102	4K	≥ 80	Type V
1-Tube 16W-1472LM-T5HO	2FT	2 Tubes 32W	2 Tubes 2944lm	92	4K	≥ 80	Type V

Note: Additional CCT's Available - 3.0K, 3.5K, 5.0K at the same wattage and lumen values.

SURGE PROTECTION DEVICE MEETS IEEE C62.41 2002 C HIGH 10kA. See spec sheet on page J12.

Pemco Lighting Products, Inc. uses the industry's leading LEDs, offering high-quality LED tubes that save energy and reduce costs. The world's first UL and DLC-qualified LED tube lights that are fully compatible with the e-ballasts of existing fluorescent lamp fixtures. Backed by more than fifty worldwide patents and numerous certifications/qualifications, these LEDs apply world-class technology to create efficient, long-lasting lighting solutions that reduce energy consumption for end users. Seamless solutions for commercial lighting needs.

FEATURES

- Available in 3000K, 3500K, 4000K and 5000K CCT.
- Lifespan of 50,000 hours, reduces power consumption by over 50%.
- 50% reduction in energy consumption over traditional fluorescent tubes.
- Very low lamp operating temperature, guaranteed longer service life.
- 300° beam angle, providing stable and evenly distributed light. No other LED lamp can offer greater than 180°.
- UL and LM80 compliant: no flickering and stroboscopic effect.
- Supports instant, rapid and programmable starts.
- Highly reliable: 50,000 hours service life with a 5-year limited system warranty.
- Made in USA.
- No warm up time: Instant start with full output.
- No flickering or stroboscopic effect, stable lamp-to-lamp color.
- Vibration and impact resistant.
- No UV emissions, and free from hazardous material.
- Lumen Tubes operate at 27.7°C (82°F) compared to fluorescent lamp's 56.1°C (133°F). This means longer service life.

ORDERING FORMAT

MODEL #	LENS	SIZE-HEIGHT	LED MODEL #	VOLTAGE	IES DIST.	OPTIONS	FINISH
CAV T8-LED	BRUSHED ACRYLIC	8', 10', 12'	10W-1020LM-T5	UNIVERSAL	TYPE V	PC	BK

OPTIONS				FINISH	
Lens Brushed Acrylic	Optical Type V	Electrical PC=Photo Control Button FS=Fuse (single) FD=Fuse (double)	Optional DIM=0-10VDC Dimming IC=Internal Cone Optics	Standard Colors BK=Black BZ=Medium Bronze DBZ=Dark Bronze WH=White GR=Green SM=Silver Metallic	Premium Colors VP=Verde Patina PP=Pewter Patina SS=Silver Sparkle CC=Custom color HG= Hartford Green TBK= Textured Black

Shown (left): Cavalier T8 LED.